

*Cine* **VERSUM**

**BLACKWING FOUR CARBON**

# BLACK WING *FOUR* CARBON

*For the past 20 years, Cineversum has been a reputed worldwide leader and pioneer in the field of private Home Cinema video-projection.*

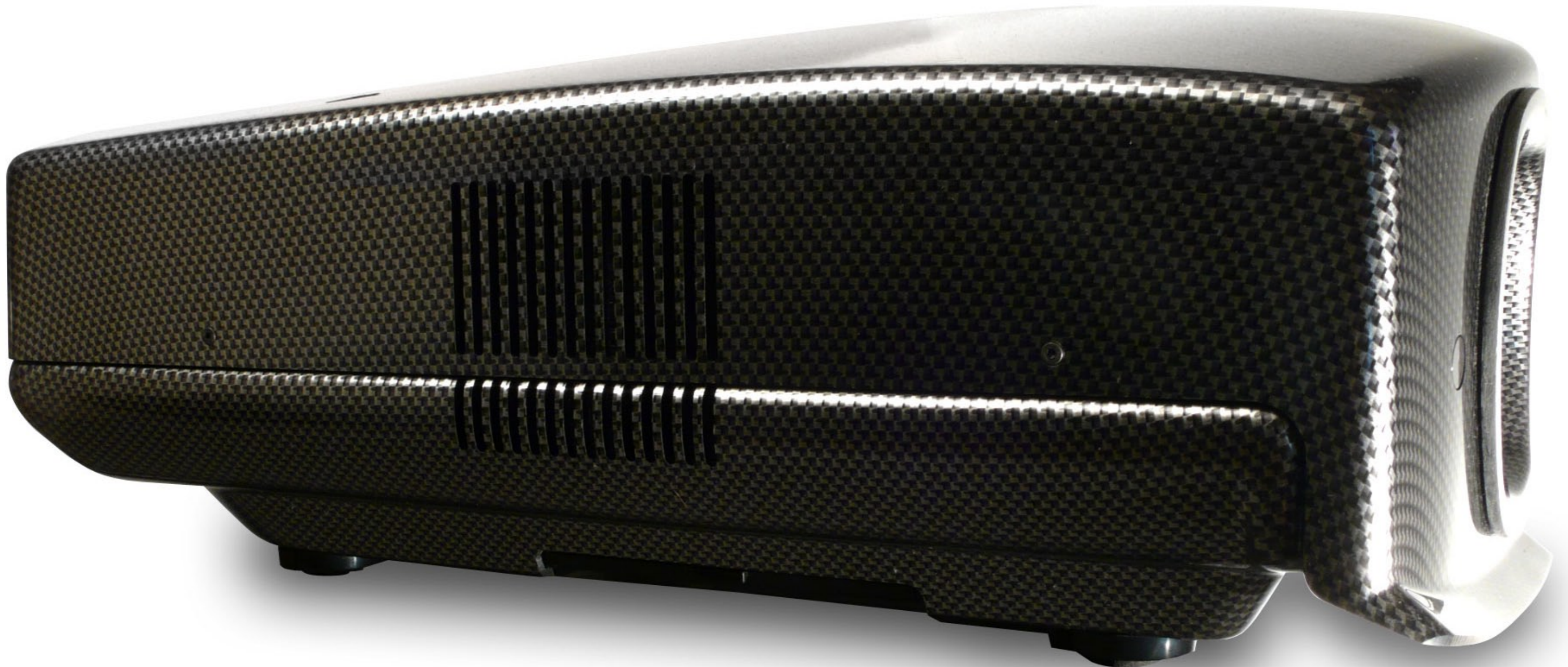
*Originally created and developed by Barco, the famous manufacturer that provides Cinema equipment to Hollywood's leading film studios and commercial theatres worldwide, the Cineversum staff will leave no stone unturned on its path to perfection.*

*As a projection user and aficionado myself, I make no concession and expect my own installation to give me the best possible result, whether I am watching my football team or my favourite movie.*

*Our philosophy at Cineversum is to provide you with a complete, adequate and high-end solution whatever your needs. From the plug-and-play projector to the most sophisticated custom installation, our Cineversum Partners and we will always offer you a tailor-made association of products that will get the best out of your own configuration.*

*I am very proud of this BlackWing Four Carbon because it combines my two biggest preoccupations when I create a new product: audacity of shape and uncompromising performance.*

Jean-Claude Younes  
CEO of Cineversum



Harmony between form and function; the ideal combination of minimalism, futurism and refinement; and the use of pure materials reflect Cineversum's dedication to absolute product integrity.

French designer Antoine Béon wanted the BlackWing line to celebrate the idea of speed and precision with this unforgettable futuristic shape. From this goal came the name, BlackWing. With its subtle shapes and purity of form, the Cineversum BlackWing range definitely brings you the timelessness and elegance of our City of Lights, Paris.

We at Cineversum give extreme attention to detail. Every single unit is carefully checked and pre-calibrated individually. Each projector is tuned for top performance and operationally life tested in the

Cineversum laboratory. Its unique characteristics are kept in a Manufacturing Identification File.

The finest measurement equipment used for our projectors is used during both the manufacturing and calibration/alignment process in the laboratory, in order to achieve the best possible projected picture out-of-the box and a long-term trouble-free operation.

At first glance, one cannot say if BlackWing Four Carbon has an animal or mineral, or even an extra-terrestrial origin. This first limited edition of the Cineversum BlackWing Four is really a unique piece of art that will be available in limited quantities through the dedicated Cineversum network.

Dealers or custom installers carrying the *Cineversum authorized Dealer* labels have proven their capability and experience over a long partnership with Cineversum.

This statement is the guarantee that your video-projector, projection screen, audio equipment, connections and control-room systems will be perfectly professionally installed and optimally tuned. A tailor-made approach that will respect your budget and interior design.

Cineversum rules the Universum! There is a local Cineversum representative or office in almost every country in the world. Check [www.cineversum.com](http://www.cineversum.com) to find yours.



The available quantities of this BlackWing Four Carbon are indeed limited, but its performance is not.

The combination of the full-glass *Pro Grade Lens* with a superior 3 chips L-COS 1080p Full-HD engine exacts the best out of any picture. The internal HQV video-processor enhances the input signal quality and removes video noise.

Key components such as the optical lens are hand-selected in order to get the purest image quality and a long operational life.

BlackWing Four comes with nine modifiable preset *Picture Modes* among which, *TH-PRO* is a special mode optimized by the Cineversum

engineers for movie watching in a dedicated dark home cinema room. On top of that, the Crystal Motion® frame interpolation method makes the image realistic and three-dimensional, which brings an immersive experience to watching sports, concerts or TV shows.

Thanks to the new *True Cinema Black* process in the BlackWing Four, dark scenes are very detailed and balanced, despite the amazing level of contrast.

In the end, the contrast ratio (70,000:1) is more than double that of the amazing BlackWing Two.

The fully motorized lens (zoom, shift and focus) of BlackWing Four will make installation extremely easy. The 2x zoom (1.4-2.8:1 throw ratio) should be compatible with any kind of room.

The vertical and horizontal lens shift capability can address the most challenging configurations. In the worst case, with the keystone correction, it is child's play to adjust the projector for the most razor-sharp picture.

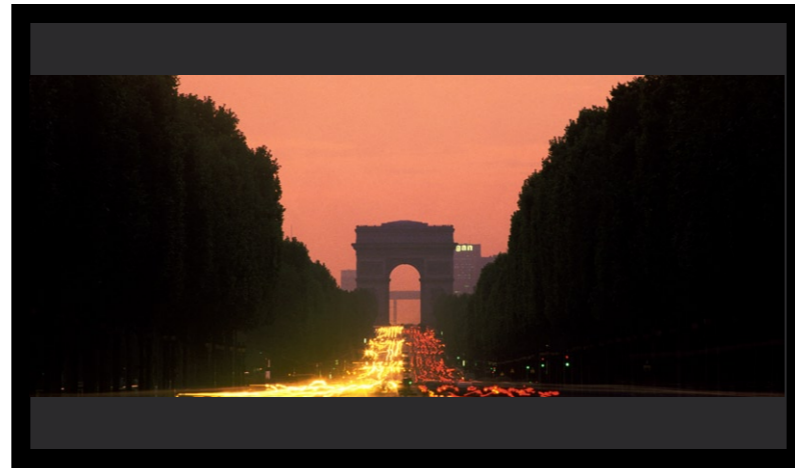
An Expert Calibration Menu (via RS232) and CMS functions (Color Management System for color calibration) are accessible for the advanced installers of BlackWing Four.



BlackWing Four Carbon is compatible with the optional Cineversum Cinemax Kit. Thanks to this proprietary accessory, you will be able to watch movies in their genuine cinemascope format on a cinemascope screen (2.35:1). This recreates the ambiance and immersive experience of commercial theatres inside your little big cinema at home.

The benefits of a *Cinemax* projection over a standard 16:9 projection are the use of all the pixels of the matrix (saving the 33% of resolution usually wasted in the black bars) and increase in brightness (+25%) allowing the use of bigger screens.

If you want to watch a classic 16:9 program, such as sports or TV shows, a complex algorithm of the projector will convert the picture back to 16:9.



a movie on a 16:9 screen



a movie on a 2.35 cinemascope screen



Model Version	BlackWing One	BlackWing Two	BlackWing Three	BlackWing Four
Model Part Number	R9010096	R9010097	R9010098	R9010099
Panel Technology	LCoS			
Resolution	Full-HD 1920x1080			
Screen Size (16:9)	60" - 240" diagonal			
Lamp Consumption	200 W			
Lamp Life	2000 hours	3000 hours (eco mode) / 2000 hours		
Brightness	1 400 ansi lumens	1 000 ansi lumens	900 ansi lumens	
Contrast Ratio	15 000:1	32 000:1	50 000:1	70 000:1
Noise Level	20 dB	19 dB		
Inputs	2x HDMI rev 1.3 1x Composite (RCA) 1x Component (3 RCA) 1x S-Video (minidin 4) 1x Analogue PC (Dsub15)	2x HDMI rev 1.3 1x Composite (RCA) 1x Component (3 RCA) 1x S-Video (minidin 4)	2x HDMI rev 1.3 1x Composite (RCA) 1x Component (3 RCA) 1x S-Video (minidin 4) 1x Analogue PC (Dsub15)	
Adjustable Iris	10 steps	3 steps	16 steps	
Picture Modes	6	8	9 including TH-Pro®	
Home-cinema Video Processing		Crystal Motion®	Crystal Motion® True Cinema Black®	
Expert Calibration Menu	Color Calibration Tool	NO	YES (installer only)	
CMS Functions	YES	NO	YES	
Optic	Full-glass Manual	Full-glass Motorized (zoom & focus)		
Throw Ratio	1.75 - 2.53:1 (1.5x zoom)	1.4 - 2.8:1 (2x zoom)		
Screen Offset	Manual Optical Shift +/- 60% vertically +/- 30% horizontally	Motorized Optical Shift +/- 80% vertically +/- 34% horizontally		
Weight	15 Kg (33.7 lbs)	13 Kg (28.6 lbs)		
Dimensions (LxWxH)	577x 530 x 199 mm 22.7 x 20.9 x 7.8 inches	500 x 386 x 199 mm 19.7 x 15.2 x 7.8 inches		
Home Automation	RS-232 (Dsub 9)	RS-232 (Dsub 9)		
12V Trigger	2	1		
Digital Keystone	YES			
Box dimensions	705x665x370 mm 20 kg	605x520x325 mm 15.2 kg		
Ceiling Mount Kit	Optional (P/N R9852064)	Optional (P/N R9852066)		
Cinemascope Kit	Cinemax Kit - (P/N T905000) Theatre Concept Kit (P/N T9004000)	Cinemax PRO Kit - Optional (P/N T905500)		