

ARCHITECTURAL  
LIGHTING<sub>4</sub>  
VISUALAPPEAL

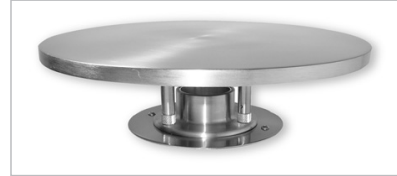
**matthews**  
visual merchandising

# ECLIPSELIGHT

Eclipse Lights are available in various finishes and have been designed for use in groupings to provide an attractive patterned illumination on wall and ceiling areas.

Standard Finish:  
Brushed Nickel  
Custom finishes  
available.

Dimensions:  
Diameter — 12"  
Stand-off — 3-1/4"  
Custom sizes available.



#### Lamp Specifications

Type: MR-16  
12-volt operation.  
A Flood or Wide Flood lamp is recommended.

#### Note:

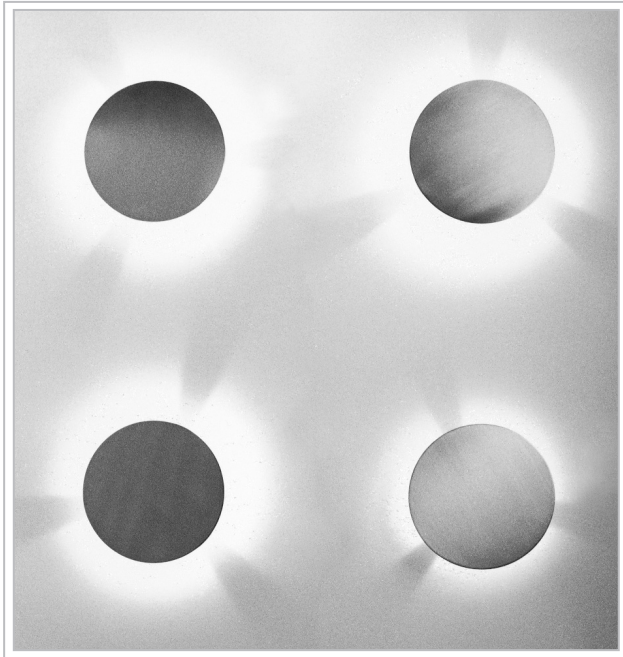
12-volt operation requires a separate power supply that is not included in the basic light package.

#### Installation:

Eclipse Lights mount directly to a wall or ceiling via a secured 4S electrical box.

#### Switching:

Switching is not provided at the fixture. It is recommended that either a wall switch or a remotely controlled dimmer switch be installed at the power source.



# CAMEOLIGHT

The Cameo light is designed as a spotlight or floodlight depending upon lamp selection. Cameo lights are fitted with an adjustable ball and socket base and may be mounted individually on walls or ceilings using a canopy kit.

Standard Finish:  
Matte Black Nickel  
Custom finishes available.

Dimensions:  
Shown approximately one-half scale.

Lamp Specifications:  
Type: MR-16  
12-volt operation.  
Depending upon application, a variety of beam angles from wide flood to narrow spot are available.

Note:  
12-volt operation requires a separate power supply that is not included in the basic light package.

Installation:  
Cameo lights may be mounted individually using a canopy kit connected to a 12-volt power supply.

Switching:  
Switching is not provided at the fixture. It is recommended that either a wall switch or a remotely controlled dimmable switch be installed at the power source.



# TORCHIEREFLOORLIGHT



Torchiere Floor Lamps are available in various finishes and have been designed to provide soft indirect base illumination.

Standard Finish:  
Brushed Nickel Base  
with Black Nickel Cone  
Custom finishes  
available.

Dimensions:  
Height — 70"  
Base Diameter — 18"  
Cone Diameter — 23"  
Custom sizes available.

#### Lamp Specifications:

Type: MR-16  
12-volt operation.

A Flood or Wide Flood lamp is recommended.

#### Note:

12-volt operation requires a separate power supply that is not included in the basic light package.

#### Installation:

Free standing on floor surface.

#### Switching:

Switching is not provided at the fixture. It is recommended that either a wall switch or a remotely controlled dimmable switch be installed at the power source.

# CAPELIGHT

Cape Lights (soft lights) are available in various architectural mesh patterns and are designed for use either individually or in groupings to provide an attractive combination of radiant and reflected diffused light on wall areas.

Standard Finish:  
Matte Black Nickel Frame.  
Satin Nickel Perforated Panel.  
Custom finishes available.

Dimensions:  
Height — 36"  
Width — 36"  
Drop from ceiling. Adjustable up to 4 feet.  
Custom sizes available.

Lamp Specifications:  
Type: MR-16  
12-volt operation.  
A Flood or Wide Flood lamp is recommended.

Note:  
12-volt operation requires a separate power supply that is not included in the basic light package.

Installation:  
Cape Lights are suspended by a conductive cable set that is connected to a 12-volt power supply via a secured 4S electrical box.

Switching:  
Switching is not provided at the fixture. It is recommended that either a wall switch or a remotely controlled dimmable switch be installed at the power source.

